

PRESENTING A BEAUTIFULLY RENOVATED FARM HOUSE IN CRESTVIEW NEIGHBORHOOD OF BETHESDA

4960 Allan Road
Bethesda, MD 20816



OFFERED FOR \$1,138,000

Home being offered by:



For more information please contact:

Andrew D. O'Neill, Principal
andrew@oneillrealtyadvisors.com

ofc. (202) 741-9405

www.oneillrealtyadvisors.com

The content provided herein is for informational purposes only and does not constitute an offer or solicitation. The information is deemed to be reliable but is subject to errors, omissions, changes and maybe withdrawn without notice. The renderings, site plans, and floor plans are for reference purposes and the details and dimensions may differ from actual plans.

** Exclusive Features **

4960 Allan Road
Bethesda, MD 20816
Offered for \$1,138,000

Represented by Andrew O'Neill, O'Neill Realty Advisors, LLC
Phone # (202) 741-9405 (Office) email: andrew@oneillrealtyadvisors.com

This sophisticated yet warm family home is located in Crestview (Westmoreland Hills Area). The original two stories plus basement house was Completely Restored/Rebuilt in 2008. Situated on a large south facing lot, this impressive Stucco Farmhouse features four bedrooms and three full baths with an attached two car garage. The home gracefully accommodates growing families or empty nesters. The unfinished basement could be a future bedroom with full bath and office/playroom. There are proposed landscaping plans for the review. In addition, a substantial addition is possible.

Quality Features – Exterior

- Stucco House
- Solid wood stained Front Dutch door with Baldwin Hardware
- Bluestone Front Entry Stoop and Side Yard Entry
- Cedar Siding
- Front and Rear Floodlights
- Front and Rear Outside Water Faucets
- Weatherproof Electrical Outlets
- Proposed Landscape plan available (not included in the sale price)

Features – Interior

- Large Foyer with slate flooring and room for a built in bench
- White Oak 5" wide Hardwood Floors on the First Floor and Original Heart pine on the second floor
- Two Coats of Satin finish Polyurethane on all Wood Floors
- Large entry closet with door activated lights
- Two Panel solid Wood Doors and new trim throughout the house
- All new porcelain Emtec Doorknobs throughout
- Custom built-in bookshelves in the Living room
- Custom built-ins in the master walk-in closet.
- Wood Burning Fireplace with Wood Mantle, Slate Hearth in Living room
- Lightolier Recessed Lights with Lutron dimmers controls in Living Rm, Family Room, Master Bedrm, Bedrms #2, #3, #4.
- Additional MR-16 adjustable picture lights in living room and family room.
- Dining Room Chandelier and Hallway Fixture
- Pre-wire for Telephone Living Rm, Family Room, Master Bedroom, Bedrooms #2, #3, #4
- Pre-Wire for Cable Television in Living Rm, Kitchen, Family Rm, Master Bedroom, Bedrooms #2, #3, #4
- ADT Security System
- Smoke Detectors Hardwired with Batter Backup on All Three Levels and all Bedrooms
- Sump Pump and Radon Vent Pipe in Basement
- Second Floor Laundry Room with Washer and Dryer Hook-ups
- All new Electrical wiring
- All new Plumbing
- Two new HVAC units

Kitchen

- Painted Maple Cabinets from Wood Harbor (Rockwood)
- Featuring Inlay doors, Farm sink cabinet, Integrated Dishwasher, Pantry Cabinets w/ rollout shelving, Wood top island w/ bookshelves and Glass Front Display Cabinets.
- Jenn-aire Stainless Steel Side-by-Side Refrigerator with Ice & Water Dispenser,
- GE Microwave, and Bosch Dishwasher, Jenn-Air Electric stove but a gas stove can be installed.

- Soap Stone Countertops
- Large Farm sink with nickel finish faucet
- Wood Top Center Island with two bookshelves
- Undercounted Halogen lighting

Baths

- Luxurious Master Bathroom with Large Shower, two sink Vanities by Rockwood with Marble Tops and Ceramic Tile on the Floor and in the large Shower.
- Painted surfaced mounted medicine cabinets and chrome sconce lighting.
- Lightolier Recessed Lights with Lutron dimmers controls
- Panasonic quiet exhaust fans
- Shared Hallway Bathroom for Bedrooms #2 and #3, with one Sink Vanity with stile stone Top, Linen Closet, and Ceramic Tiled Floor and Tub/Shower
- First Floor Full Bath with Sink Vanity with Cultured Marble Top and Tiled Floor and Tub/Shower
- Kohler Bancroft Faucets in second floor Bathrooms

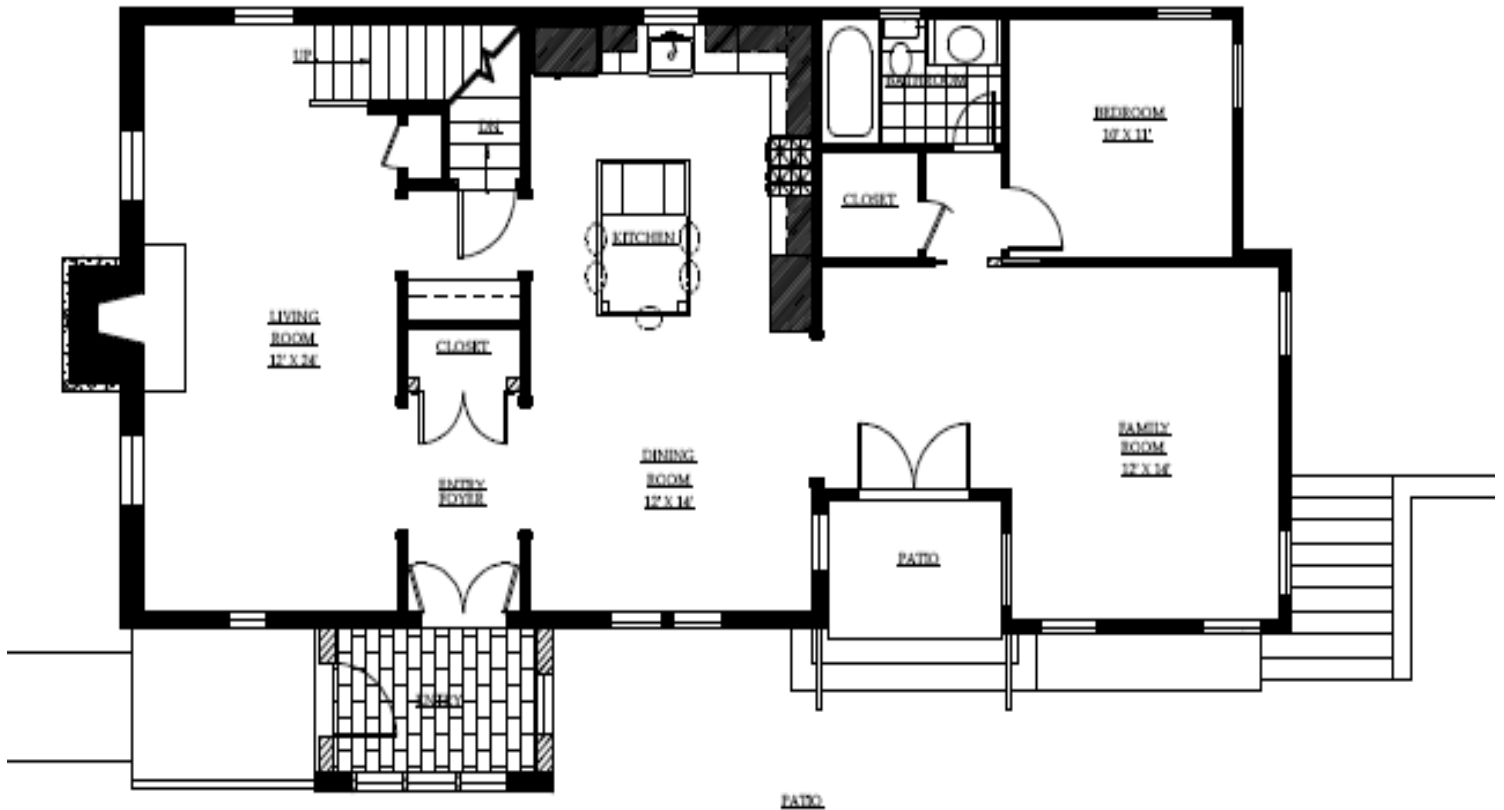
Energy Efficiency Package

- Double-Hung Vinyl Windows with Tilt-in Feature for Easy Cleaning, Insulated Glass and Screens
- Insulation: Walls and Attic
- 75 Gallon Gas Hot Water Heater
- Two-Zone Gas Heat
- Two-Zone Central Air Conditioning

Parking

- Two Car Garage with work bench area
- Automatic Garage Door Openers
- Asphalt Driveway

Owner does not warrant any of the above listed items or features.



4960 ALLAN ROAD
FIRST FLOOR PLAN

Home being offered by:



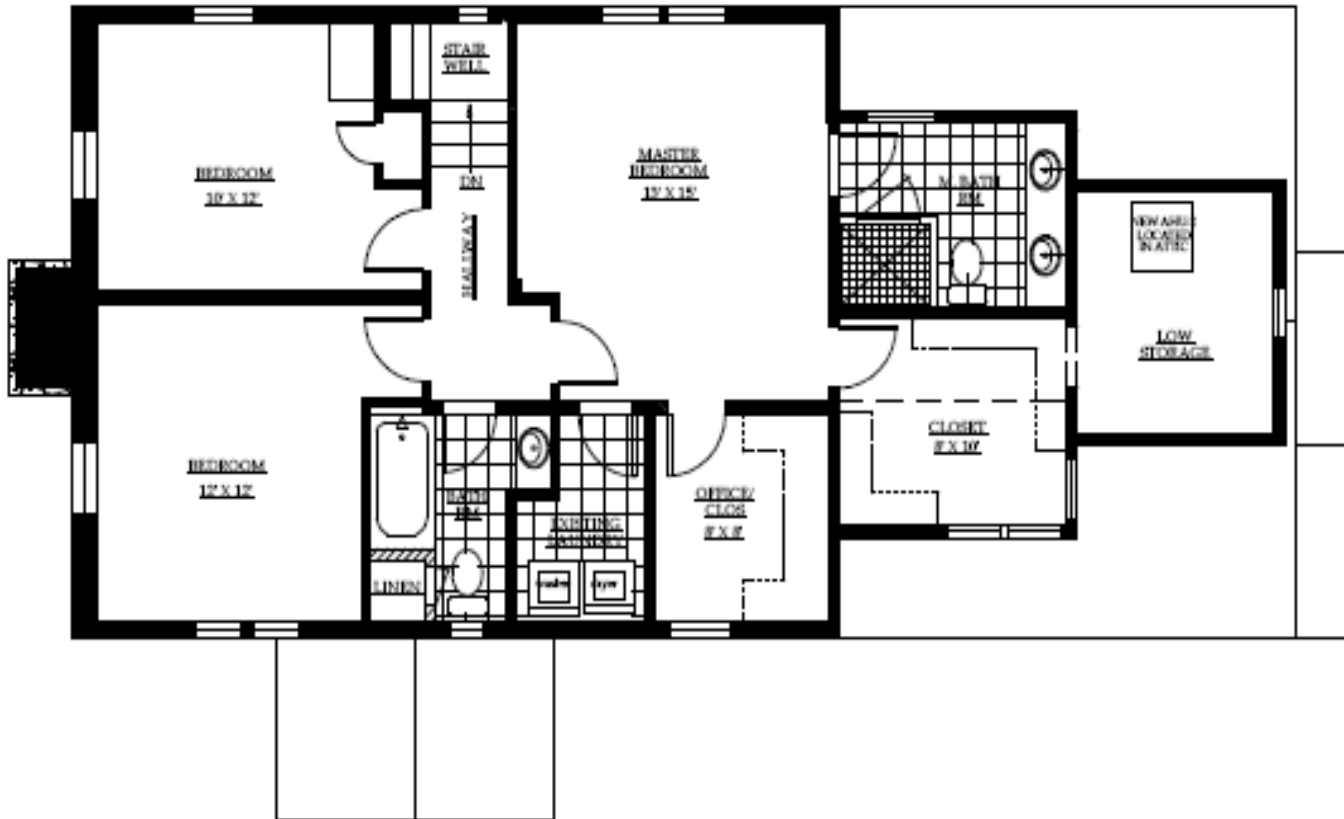
For more information please contact:

Andrew D. O'Neill, Principal
andrew@oneillrealtyadvisors.com

ofc. (202) 741-9405

www.oneillrealtyadvisors.com

The content provided herein is for informational purposes only and does not constitute an offer or solicitation. The information is deemed to be reliable but is subject to errors, omissions, changes and may be withdrawn without notice. The renderings, site plans, and floor plans are for reference purposes and the details and dimensions may differ from actual plans.



4960 ALLAN ROAD
SECOND FLOOR PLAN

Home being offered by:



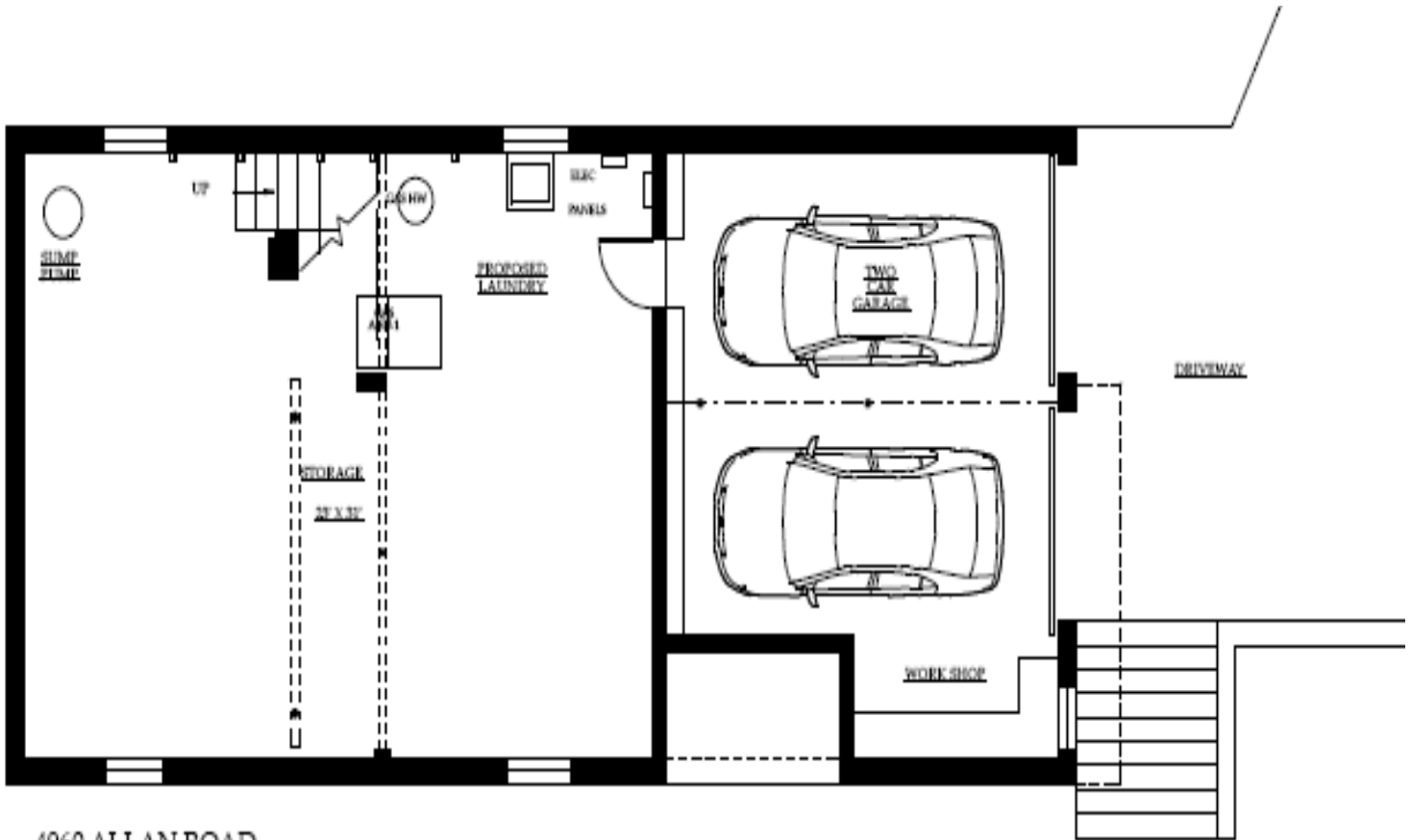
For more information please contact:

Andrew D. O'Neill, Principal
andrew@oneillrealtyadvisors.com

ofc. (202) 741-9405

www.oneillrealtyadvisors.com

The content provided herein is for informational purposes only and does not constitute an offer or solicitation. The information is deemed to be reliable but is subject to errors, omissions, changes and maybe withdrawn without notice. The renderings, site plans, and floor plans are for reference purposes and the details and dimensions may differ from actual plans.



4960 ALLAN ROAD
CELLAR FLOOR PLAN

Home being offered by:



For more information please contact:

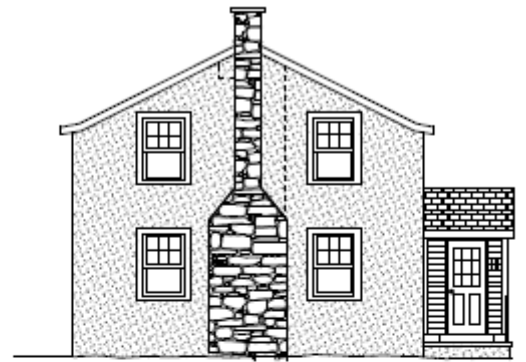
Andrew D. O'Neill, Principal

andrew@oneillrealtyadvisors.com

ofc. (202) 741-9405

www.oneillrealtyadvisors.com

The content provided herein is for informational purposes only and does not constitute an offer or solicitation. The information is deemed to be reliable but is subject to errors, omissions, changes and maybe withdrawn without notice. The renderings, site plans, and floor plans are for reference purposes and the details and dimensions may differ from actual plans.



ALLAN ROAD ELEVATIONS

Home being offered by:



For more information please contact:

Andrew D. O'Neill, Principal

andrew@oneillrealtyadvisors.com

ofc. (202) 741-9405

www.oneillrealtyadvisors.com

The content provided herein is for informational purposes only and does not constitute an offer or solicitation. The information is deemed to be reliable but is subject to errors, omissions, changes and maybe withdrawn without notice. The renderings, site plans, and floor plans are for reference purposes and the details and dimensions may differ from actual plans.