

# PRESENTING ANOTHER EXQUISITE NEW HOME BUILT BY ACCLAIMED WELTY HOMES IN GLENBROOK VILLAGE

4605 N. Chelsea Lane  
Bethesda, MD 20814



FRONT ELEVATION

**AVAILABLE SPRING OF 2010**

Home being offered by:



**For more information please contact:**

**Andrew D. O'Neill, Principal**  
[andrew@oneillrealtyadvisors.com](mailto:andrew@oneillrealtyadvisors.com)

ofc. (202) 741-9405

[www.oneillrealtyadvisors.com](http://www.oneillrealtyadvisors.com)

The content provided herein is for informational purposes only and does not constitute an offer or solicitation. The information is deemed to be reliable but is subject to errors, omissions, changes and maybe withdrawn without notice. The renderings, site plans, and floor plans are for reference purposes and the details and dimensions may differ from actual plans. Standard and optional features may vary. Builder reserves the right to initiate changes without prior notice.

## \* *Exclusive Features* \*

4605 N. Chelsea Lane  
Bethesda, MD 20814  
Built by Welty Homes  
*Offered for \$1,285,000*

Represented by Andrew O'Neill, O'Neill Realty Advisors, LLC  
Phone # (202) 741-9405 (Office) email: andrew@oneillrealtyadvisors.com

### **Quality Features – Exterior**

- \* Stone to Grade on Front of Home
- \* Stone on Front Porch and Front Steps
- \* Hardi-Plank Pre-Finished Fiber-Cement Siding
- \* Sodded Lawn and Builder Landscape Package
- \* Front and Rear Floodlights
- \* Front and Rear Outside Water Faucets
- \* Weatherproof Electrical Outlets (2)
- \* 30-Year Asphalt Roof Shingles
- \* Door Bell at Front Door

### **Quality Features – Interior**

- \* Nine Foot Ceilings on Main Level
- \* Oak Stair Treads and Risers on Main Staircase
- \* Oak Hardwood Floors in Den, Foyer, Dining Room, Kitchen, Breakfast Room, Family Room, Powder Room and Second Floor Hall
- \* Two Coats of Polyurethane on all Wood Floors
- \* Custom Molding Package – Includes Upgraded Base Moldings and Cased Openings on First Floor; Three-Piece Crown Moldings in Family Room, Dining Room, Den, Foyer, First Floor Hall And Second Level Hall; Chair Rail and Picture Molding In Dining Room
- \* Six Panel Colonial Doors
- \* Wall-to-Wall Carpeting in All Upper Level Bedrooms
- \* Gas Fireplace with Wood Mantle, Slate Hearth and Surround in Family Room
- \* Recessed Lights in Kitchen, Family Room, Den, First & Second Level Halls, Owner's Bedroom Suite
- \* Pre-wire for Ceiling Fan in Owner's Bedroom
- \* Overhead Lights in Bedrooms #2, #3, #4
- \* Dining Room Chandelier and Main Level Foyer Fixture
- \* Pre-wire for Telephone in Kitchen, Family Room, Den, Owner's Bedroom, Bedrooms #2, #3, #4
- \* Pre-Wire for Cable Television in Family Room, Den, Owner's Bedroom, Bedrooms #2, #3, #4
- \* Pre-wire for Security System (system not included)
- \* Smoke Detectors Hardwired with Batter Backup on All Three Levels and all Bedrooms
- \* Carbon Monoxide Detectors on All Levels
- \* Sump Pump and Radon Vent Pipe in Basement
- \* Fire Sprinkler System
- \* Second Floor Laundry Room with Washer and Dryer Hook-ups (Washer and Dryer not included)
- \* Laundry Sink in Second Floor Laundry

### **Kitchen**

- \* Cherry Cabinets Featuring Built-in Desk, Pantry Cabinets, Lazy Susan, and Glass Front Display Cabinets
- \* GE Profile Stainless Steel Appliances in Kitchen: Side-by-Side Refrigerator with Ice & Water Dispenser, Wall Oven, Microwave, and Dishwasher, Jenn-Air Gas Downdraft Cooktop
- \* Granite Countertops
- \* Large Stainless Steel Undermount Sink
- \* Breakfast Area with Bay Window
- \* Center Island with Spacious Breakfast Bar
- \* Recessed Lighting

### **Baths**

- \* Luxurious Owner's Bathroom with Whirlpool Tub. Separate Shower, Separate Toilet Room, Two Cherry Vanities with Granite Tops, and Ceramic Tile Floor, Tub Surround, and Shower
- \* Shared Full Bathroom for Bedrooms #2 and #3, with Two Sink Vanity with Cultured Marble Top, Linen Closet, and Ceramic Tiled Floor and Tub/Shower
- \* Third Full Bath with Sink Vanity with Cultured Marble Top and Tiled Floor and Tub/Shower
- \* Powder Room with Pedestal Sink
- \* Kohler Fairfax Faucets in All Bathrooms
- \* Fourth Full Bath in Attic

### **Energy Efficiency Package**

- \* Double-Hung Andersen Windows with Tilt-in Feature for Easy Cleaning, Insulated Glass and Screens
- \* Insulation: R-13 Walls, R-38 Attic, R-II Basement Walls
- \* All Windows, Doors and Outlets are Ener-Sealed
- \* Entire House Wrapped with Tyvek
- \* 75 Gallon Hot Water Heater
- \* Two-Zone Gas Heat
- \* Two-Zone Central Air Conditioning
- \* Humidifier on Basement Furnace

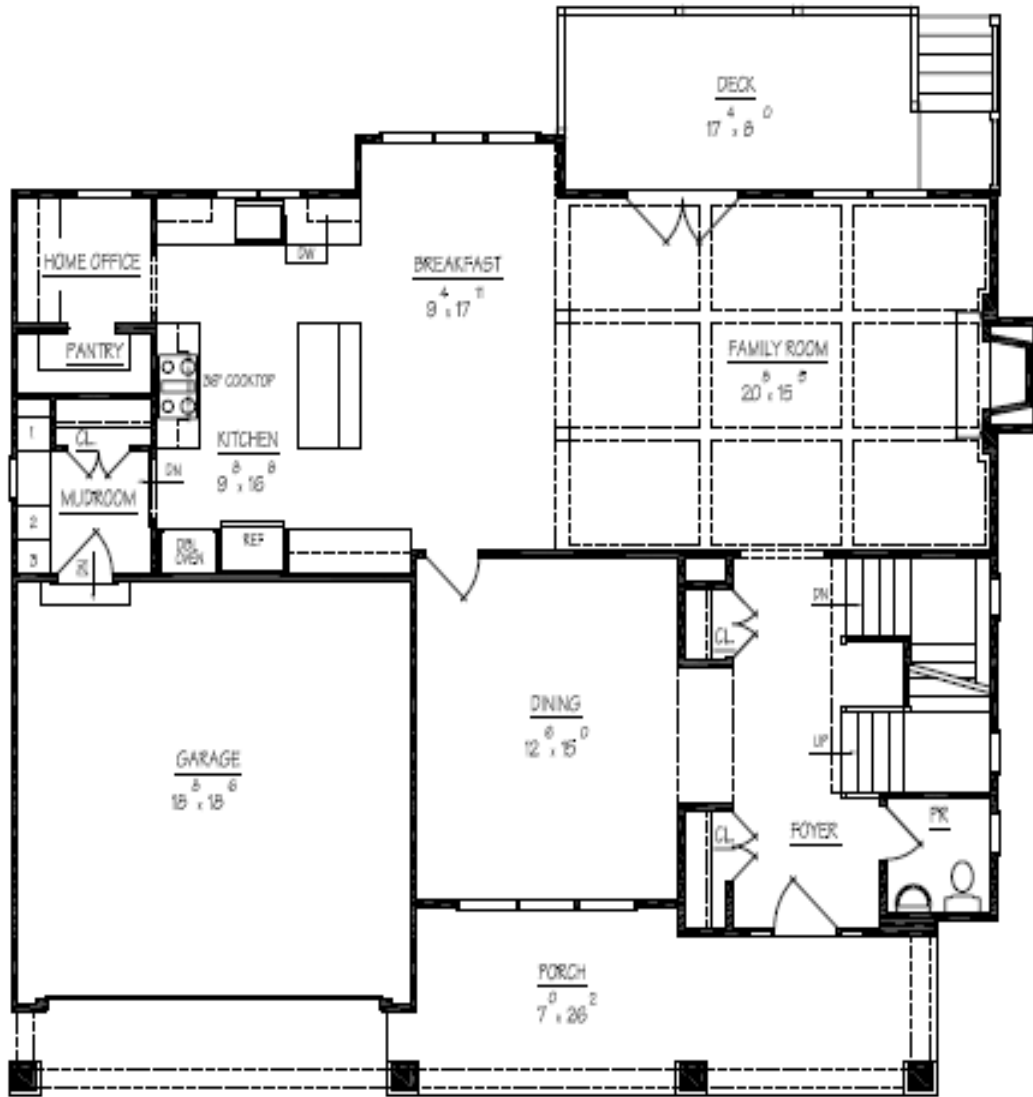
### **Parking**

- \* Two Car Garage
- \* Automatic Garage Door Openers
- \* Concrete Driveway

### **Warranty**

- \* Pre-Inspection with Builder
- \* Builder One Year Warranty
- \* Ten Year QBW Buyer Protection Plan

*Approximately 3,563 Ft of Finished Living Space, not including Basement*  
*Optional Basement - \$42,350*  
Subject to Change without Notice



**FIRST FLOOR PLAN**

1245 SQ. FT. FINISHED  
 364 SQ. FT. GARAGE  
 194 SQ. FT. FRONT PORCH  
 1582 SQ. FT. LOT COVERAGE

Home being offered by:



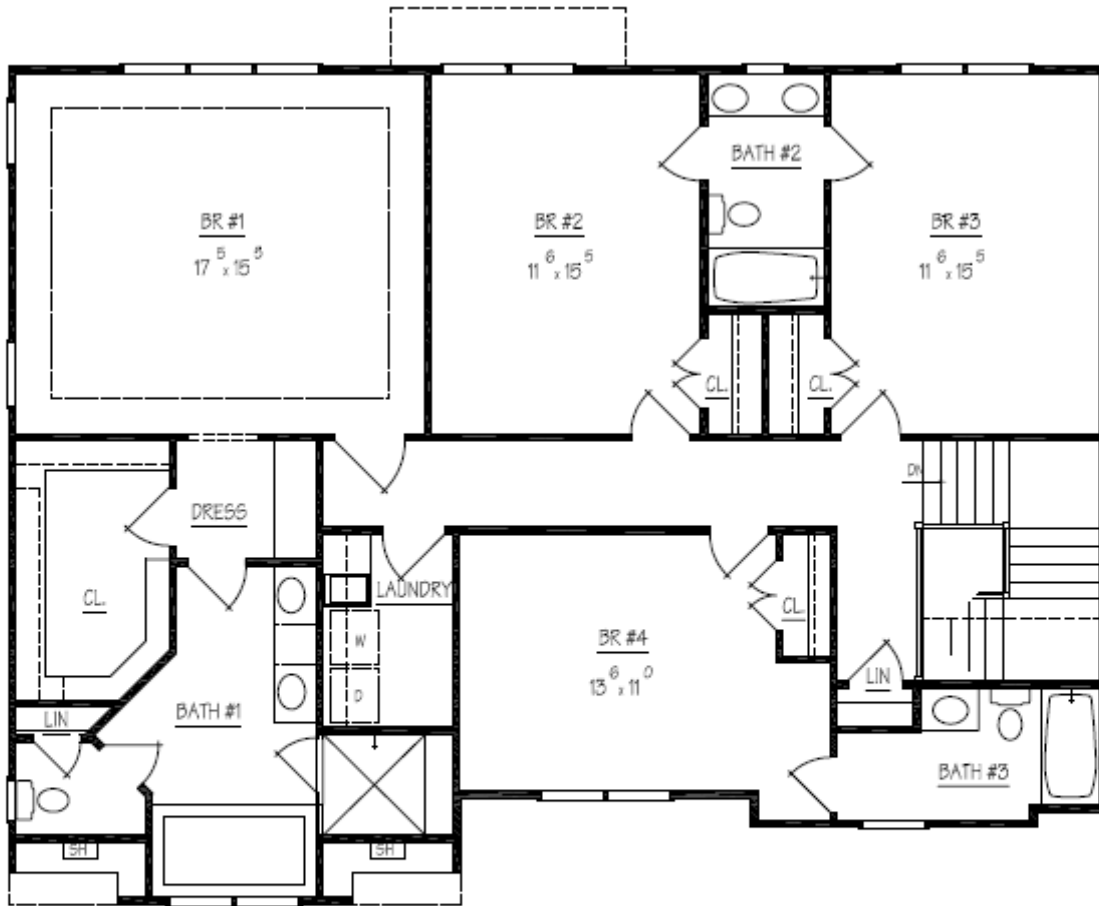
**For more information please contact:**

**Andrew D. O'Neill, Principal**  
[andrew@oneillrealtyadvisors.com](mailto:andrew@oneillrealtyadvisors.com)

ofc. (202) 741-9405

[www.oneillrealtyadvisors.com](http://www.oneillrealtyadvisors.com)

The content provided herein is for informational purposes only and does not constitute an offer or solicitation. The information is deemed to be reliable but is subject to errors, omissions, changes and maybe withdrawn without notice. The renderings, site plans, and floor plans are for reference purposes and the details and dimensions may differ from actual plans. Standard and optional features may vary. Builder reserves the right to initiate changes without prior notice.



SECOND FLOOR PLAN  
1540 SQ. FT. FINISHED

Home being offered by:



**For more information please contact:**

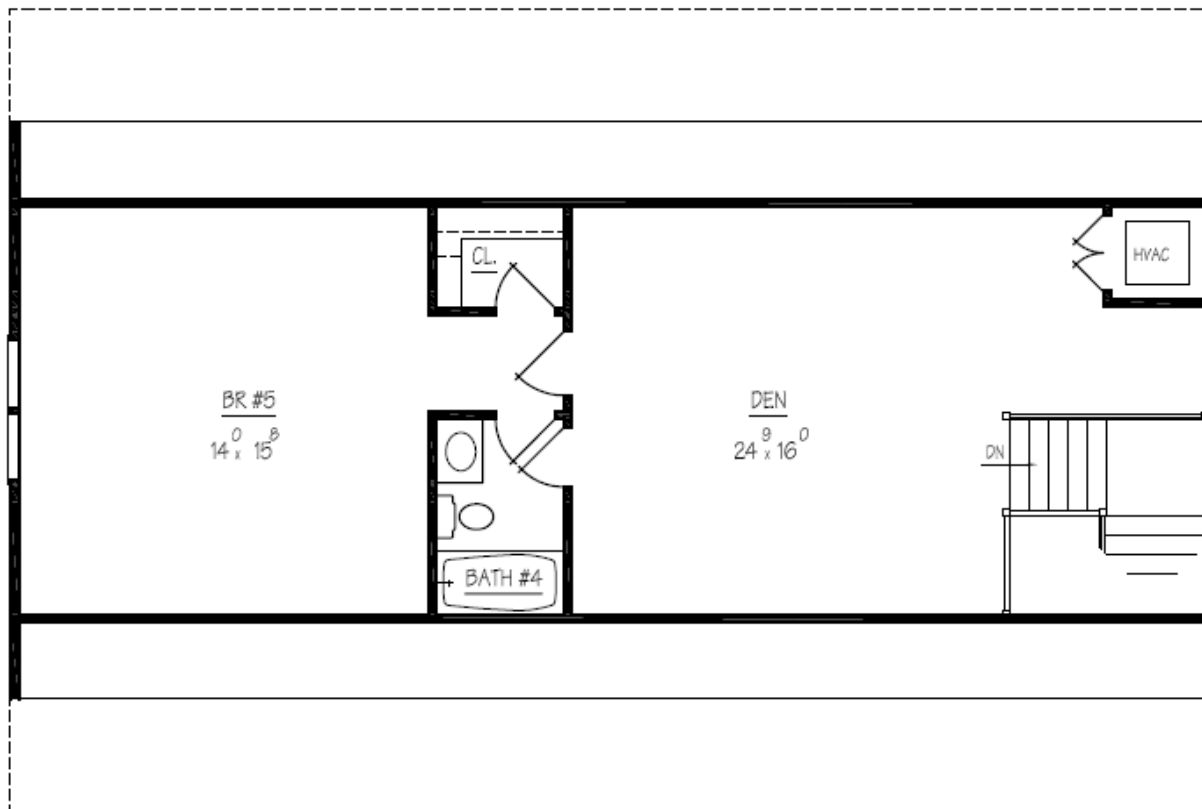
**Andrew D. O'Neill, Principal**

[andrew@oneillrealtyadvisors.com](mailto:andrew@oneillrealtyadvisors.com)

ofc. (202) 741-9405

[www.oneillrealtyadvisors.com](http://www.oneillrealtyadvisors.com)

The content provided herein is for informational purposes only and does not constitute an offer or solicitation. The information is deemed to be reliable but is subject to errors, omissions, changes and maybe withdrawn without notice. The renderings, site plans, and floor plans are for reference purposes and the details and dimensions may differ from actual plans. Standard and optional features may vary. Builder reserves the right to initiate changes without prior notice.



THIRD FLOOR PLAN

780 SQ. FT. FINISHED

Home being offered by:



**For more information please contact:**

**Andrew D. O'Neill, Principal**

[andrew@oneillrealtyadvisors.com](mailto:andrew@oneillrealtyadvisors.com)

ofc. (202) 741-9405

[www.oneillrealtyadvisors.com](http://www.oneillrealtyadvisors.com)

The content provided herein is for informational purposes only and does not constitute an offer or solicitation. The information is deemed to be reliable but is subject to errors, omissions, changes and maybe withdrawn without notice. The renderings, site plans, and floor plans are for reference purposes and the details and dimensions may differ from actual plans. Standard and optional features may vary. Builder reserves the right to initiate changes without prior notice.



BASEMENT PLAN

135 SQ. FT. FINISHED  
712 SQ. FT. OPT. FINISH

Home being offered by:



**For more information please contact:**

**Andrew D. O'Neill, Principal**  
[andrew@oneillrealtyadvisors.com](mailto:andrew@oneillrealtyadvisors.com)

ofc. (202) 741-9405

[www.oneillrealtyadvisors.com](http://www.oneillrealtyadvisors.com)

The content provided herein is for informational purposes only and does not constitute an offer or solicitation. The information is deemed to be reliable but is subject to errors, omissions, changes and maybe withdrawn without notice. The renderings, site plans, and floor plans are for reference purposes and the details and dimensions may differ from actual plans. Standard and optional features may vary. Builder reserves the right to initiate changes without prior notice.